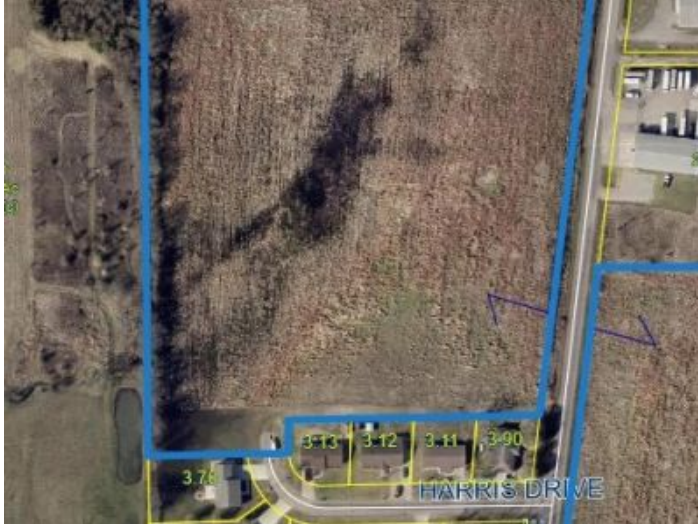




10.10 Acres- David Lane, Sikeston, MO 63801 -- \$110,000

Listing Courtesy of: Sikeston Real Estate LLC



Trammell and Son Realty

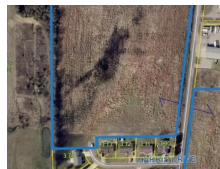
18 E. Vine Street
Dexter, MO 63841
573-624-5538 • Fax: 573-624-4241
info@trammellandson.com
<http://www.trammellandson.com>

Acres: 10.10
County Taxes: 220
Cropland: No
Pasture: No

Water: City
Waste: Sewer
Woods: No
Hill Land: No
Graded: No
Irrigated: No

Flood Zone: Undetermined
Zoning: Agriculture
County: Scott
School: Sikeston
Rural: No

New Price!! 10.10 acres in Sikeston. Ready for your new business or an expansion! Perfect for a home or subdivide for multiple lots.



Information deemed reliable but not guaranteed, all rights reserved by SemoMLS.com