



Lot 20, Timber Creek, Dexter, MO 63841 -- \$38,000

Listing Courtesy of: Smith Payne Realty LLC



Trammell and Son Realty

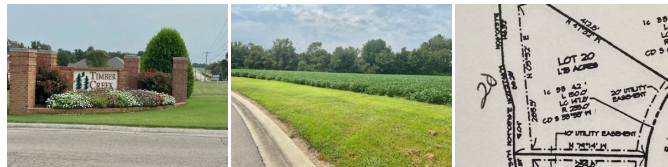
18 E. Vine Street
Dexter, MO 63841
573-624-5538 • Fax: 573-624-4241
info@trammellandson.com
<http://www.trammellandson.com>

Acres: 1.75
County Taxes: 10
Cropland: No
Pasture: No

Water: City
Waste: Sewer
Woods: No
Hill Land: No
Graded: No
Irrigated: No

Flood Zone: No
Zoning: R
County: Stoddard
School: Dexter
Rural: No

Looking to build in perfect location ? Timber Creek Subdivision has 9 lots available to choose from. As you enter the Bricked entrance , you will notice how well this subdivision is maintained. It's quiet and close to Dexter schools ! City water and sewer, with Ameren electric lines underground and natural gas. Plat map available.



Information deemed reliable but not guaranteed, all rights reserved by SemoMLS.com