



Highway K, Scott City, MO 63780 -- \$772,000

Listing Courtesy of: Lorimont Commercial Real Estate



Built	51.78 Lot	0 Building	Empty Status
-------	--------------	---------------	-----------------

Trammell and Son Realty

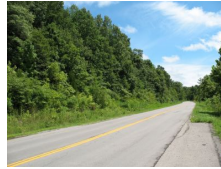
18 E. Vine Street
 Dexter, MO 63841
 573-624-5538 • Fax: 573-624-4241
 info@trammellandson.com
 http://www.trammellandson.com

Zoning: Industrial
Status: Empty

Utilities: Public
Water: County
Waste: Sewer
Rural: No

Acres: 51.78
Flood Zone: Undetermined
County: Scott
County Taxes: 44

Adjacent to SEMO Regional Port Authority are these 30.65 acre and 21.13 acre tracts suitable for most any use with commercial and industrial potential. 1,162 feet of frontage on Highway K and 1,552 feet of frontage on County Road 301. City utilities are close. Listing includes adjacent parcel #01-8.0-28.00-000-000-007.20 for a total of 51.78 acres. Only \$14,900 per acre!



Information deemed reliable but not guaranteed, all rights reserved by SemoMLS.com