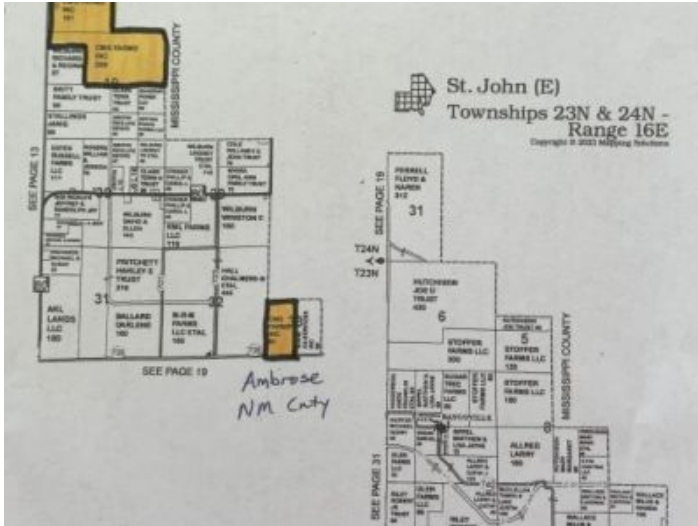




County Rds 803 & 812 , , MO -- \$5,400,000

Listing Courtesy of: Goodin Auction & Real Estate



Trammell and Son Realty

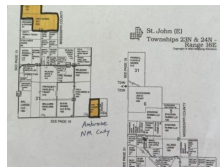
18 E. Vine Street
Dexter, MO 63841
573-624-5538 • Fax: 573-624-4241
info@trammellandson.com
<http://www.trammellandson.com>

County Taxes:
Cropland: Yes
Pasture: No

Water: Other
Waste: Other
Woods: No
Hill Land: No
Graded: No
Irrigated: Yes

Flood Zone: No
Zoning: agriculture
County: New Madrid
School: New Madrid
Rural: Yes

Great investment opportunity. 450 acres of excellent farmland. Locally know as the Stancil Farm. It has 3 pivots, 2 are 7 tower and 1 is 5 tower. High yields for corn, cotton, soy beans and wheat. Located on west side of East Prairie on County Road 803 & 812. Sections 18 & 19. Township 25N Range 15 E



Information deemed reliable but not guaranteed, all rights reserved by SemoMLS.com